



Arlington Park Mansions, London, W4 4HE

£585,000

WHITMAN & CO.

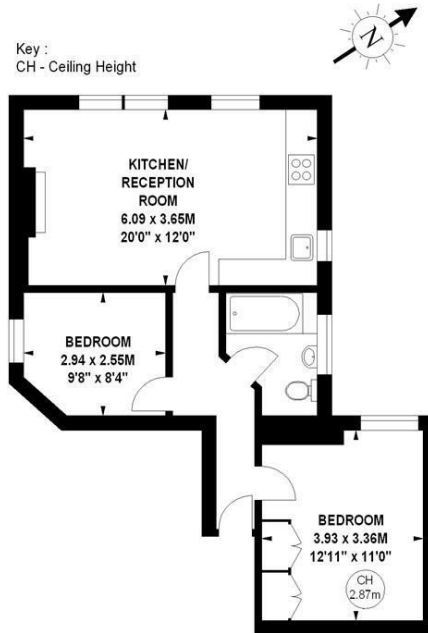
SALES · LETTINGS · COMMERCIAL

- First floor mansion flat
- West facing reception room
- Sought after red brick building
- Newly fitted kitchen
- Central Chiswick location
- Moments from shops and tube

Arlington Park Mansions, W4

Approximate gross internal area

54.16 sq m / 583 sq ft



First Floor

The floor plan is not to scale and measurements and areas shown are approximate and therefore should be used for illustrative purposes only. The plan has been prepared in accordance with the RICS code of Measuring Practice and whilst we have confidence in the information produced, it must not be relied on. If there is any aspect of particular importance, you should carry out or commission your own inspection of the property.
Copyright of FeaturePRO.

Tenure - Leasehold with share in the freehold
Lease length - 961 Years remaining
Ground Rent - Peppercorn
Service Charge - £4,351.82 pa
Local authority - Hounslow
Council Tax - Band D

THE PROPERTY

A beautifully presented first-floor apartment set within a sought-after red brick mansion block, ideally located opposite Turnham Green and just moments from the wide range of shops, cafés, and restaurants along Chiswick High Road.

The flat offers a bright west-facing open-plan kitchen/reception room, complete with a feature fireplace and sash windows. The accommodation also includes a double bedroom with fitted wardrobes, a second bedroom with views over the green, a stylish bathroom, an entrance hall, and high ceilings throughout.

Further benefits include a share of the freehold. Arlington Park Mansions is superbly positioned for transport, with Chiswick Park Station just a 3-minute walk away, as well as local bus routes and excellent road access via the A4/M4 for routes in and out of London.

SITUATION



5-7 Turnham Green Terrace, Chiswick, London, W4 1RG

Tel 020 8747 8800

E-mail sales@whitmanandco.com

Website www.whitmanandco.com